


Ready Reckoner 2022

Your Pathfinder to the Right Engineering College

By Mekhla Sinha, Executive Director, GHRDC



Students must keep in mind certain important parameters while deciding to join an institute, namely unique pedagogy, campus culture, updated curriculum, faculty, infrastructure, alumni, placements, etc.

In the existing scenario after schooling, the students find themselves dealing with a plethora of career choices and options to decide their future career path. Engineering has always been one of the favourite promising career choices for many young students.

Once a student decides to go ahead with Engineering as a career choice, they find themselves grappling with another pertinent question of choosing the right institute, especially in a scenario where our country offers innumerable options of educational institutions.

It is indeed a crucial task for recruiters also to select the perfect educational institution according to their needs and requirements for hiring during final placements/projects respectively.

Keeping the above scenario in mind, it has become most imperative for students to be alert while making a choice in selecting the right institute. They should be careful and alert while deciding on an institute based on their needs and requirements. Students must keep in mind certain important parameters while deciding to join an institute, namely unique pedagogy, campus culture, updated curriculum, faculty, infrastructure, alumni, placements, etc. Students and their families also need to be updated regarding factors like hostel facilities, cost of education, faculty quality and accreditation, etc. to help them decide on the right institute.

With this background, CSR-GHRDC Engineering College Schools Survey 2022 has come up with the “Ready Reckoner” as an easy reference tool to assist the students and recruiters.



Ready Reckoner of Top Engineering Colleges

The table below provides detailed information to benefit the stakeholders, particularly prospective students seeking admission into Engineering Colleges and recruiters looking for suitable candidates through campus placement. Year of Establishment, Accreditation (National / International), Tuition Fees (Tuition + Others Fees), Hostels Facility, Percentage of Ph.D. for Core Faculty, Availability of Ph.D. / Fellow Programme, Mode of Entrance and whether the Institute is a Government or Private Institution have been shown in the table, which hopefully will facilitate students to select an institute suited to him/her according to individual choice. This will also facilitate recruiters to select an institute for campus recruitment. The Institutes are listed alphabetically.

Sl. No.	Name of the Engineering College	Year of Establishment*	Government / Private*	Accreditation (National / International)*	On Campus Hostel Facility Available*	Ph.D. / Fellow Programme in Engineering*	% of Core Faculty with Ph.D.*	Mode of Entrance*	Tuition Fees (Tuition + Other Fees) (Rs. in Lakh)*
1	Aditya Engineering College, Surampalem, Andhra Pradesh	2001	Private	NAAC	Yes	No	9	APEAPCET / Other	2.05
2	Ajay Kumar Garg Engineering College, Ghaziabad, Uttar Pradesh	1998	Private	NBA	Yes	No	32	JEE	4.97
3	Amrutvahini College of Engineering, Sangamner, Maharashtra	1983	Private	NBA	Yes	Yes	18	JEE / SLET	4.97
4	Bannari Amman Institute of Technology, Erode, Tamil Nadu	1996	Private	NBA / NAAC	Yes	Yes	29	NA	3.00
5	Bonam Venkata Chalamayya Engineering College, East Godavari, Andhra Pradesh	1997	Private	NAAC	Yes	No	10	APEAMCET	2.43
6	BRAC'T'S, Vishwakarma Institute of Information Technology, Pune, Maharashtra	2002	Private	NAAC / NBA	No	Yes	23	JEE / SLET / Other	6.29
7	Builders Engineering College, Kangeyam, Tamil Nadu	2009	Private	NA	Yes	No	21	Other	2.10
8	Capital Engineering College, Bhubaneswar, Odisha	2010	Private	NA	Yes	No	6	JEE / SLET	2.48
9	Chitkara University Institute of Engineering & Technology, Rajpura, Punjab	2002	Private	NAAC / IET	Yes	Yes	47	JEE	7.00
10	Chouksey Engineering College, Bilaspur, Chhattisgarh	2001	Private	NA	Yes	No	13	JEE / SLET / Other	3.02
11	CMR College of Engineering & Technology, Hyderabad, Telangana	2002	Private	NAAC	Yes	No	29	SLET	4.22
12	CMR Engineering College, Hyderabad, Telangana	2010	Private	NAAC / NBA	Yes	No	22	SLET / Other	2.86
13	CMR Institute of Technology, Hyderabad, Telangana	2005	Private	NBA / NAAC	Yes	No	17	SLET	3.71
14	College of Agricultural Engineering and Technology, Junagadh, Gujarat	1984	Government	NA	Yes	Yes	40	GUJCET / AIEEA	0.52
15	College of Engineering, Pune, Maharashtra	1854	Government	NBA	Yes	Yes	60	SLET / Other	1.83
16	D. K. T. E. Society's Textile & Engineering Institute (An Autonomous Institute), Kolhapur, Maharashtra	1983	Private	NBA	Yes	Yes	21	JEE / SLET	4.04
17	DAV Institute of Engineering & Technology, Jalandhar, Punjab	2000	Private	NAAC	Yes	No	48	JEE	3.43



CSR-GHRDC Engineering Colleges Survey 2022

Sl. No.	Name of the Engineering College	Year of Establishment*	Government / Private*	Accreditation (National / International)*	On Campus Hostel Facility Available*	Ph.D. / Fellow Programme in Engineering*	% of Core Faculty with Ph.D.*	Mode of Entrance*	Tuition Fees (Tuition + Other Fees) (Rs. in Lakh)*
18	Delhi Technological University (Formerly Delhi College of Engineering), Shahabad Daultpur, Delhi	1941	Government	NBA / NAAC	Yes	Yes	35	JEE	6.45
19	Dr. C. V. Raman Institute of Science & Technology, Dr. C. V. Raman University, Bilaspur, Chhattisgarh	2006	Private	NAAC	Yes	Yes	23	SLET	2.49
20	Dr. C. V. Raman University, Vaishali, Bihar	2019	Private	NA	No	No	23	SLET	3.35
21	Dwarkadas J. Sanghvi College of Engineering, Mumbai, Maharashtra	1994	Private	NAAC / NBA	No	Yes	35	SLET	7.47
22	Erode Sengunthar Engineering College, Erode, Tamil Nadu	1996	Private	NBA	Yes	Yes	23	NA	2.26
23	Faculty of Science & Technology, ICFAI Foundation for Higher Education, Hyderabad, Telangana	2010	Private	NAAC	Yes	Yes	75	ATTI	9.50
24	Federal Institute of Science and Technology, Ernakulam, Kerala	2002	Private	NBA	Yes	No	15	SLET	3.77
25	G. Pulla Reddy Engineering College (Autonomous), Kurnool, Andhra Pradesh	1984	Private	NBA / NAAC	Yes	Yes	37	JEE / SLET	2.80
26	G. Pullaiah College of Engineering and Technology, Kurnool, Andhra Pradesh	2007	Private	NAAC / NBA	Yes	No	13	SLET	2.53
27	G.L. Bajaj Institute of Technology & Management, Greater Noida, Uttar Pradesh	2005	Private	NBA	Yes	No	42	JEE / Other	4.22
28	Galgotias University, Greater Noida, Uttar Pradesh	2011	Private	NBA	Yes	Yes	34	JEE	6.36
29	Gandhi Institute for Technology (GIFT), Bhubaneswar, Odisha	2007	Private	NBA / NAAC	Yes	No	28	JEE / SLET	2.92
30	Geethanjali College of Engineering and Technology, Medchal, Telangana	2005	Private	NAAC	No	No	22	SLET	3.94
31	GMR Institute of Technology, Srikakulam, Andhra Pradesh	1997	Private	NBA / NAAC	Yes	No	62	SLET / Other	2.64
32	Gokaraju Rangaraju Institute of Engineering and Technology, Hyderabad, Telangana	1997	Private	NAAC	Yes	Yes	27	JEE / SLET / Other	5.10
33	Greater Noida Institute of Technology, Greater Noida, Uttar Pradesh	2001	Private	NA	Yes	No	24	JEE	4.35
34	Guru Nanak Dev Engineering College, Ludhiana, Punjab	1956	Government	NAAC / NBA	Yes	Yes	33	JEE / Other	3.70
35	Guru Nanak Institutions Technical Campus (Autonomous), Ibrahimpatnam, Telangana	2001	Private	NAAC / NBA	Yes	No	11	EMCET	4.53
36	Hindustan Institute of Technology & Science (Deemed to be University), Chennai, Tamil Nadu	1985	Private	NAAC / NBA	Yes	Yes	39	HITSEE	8.33
37	Hindusthan College of Engineering and Technology, Coimbatore, Tamil Nadu	2000	Private	NAAC / NBA	Yes	Yes	43	SLET	10.40
38	I.T.S Engineering College, Greater Noida, Uttar Pradesh	2006	Private	NAAC / NBA	Yes	No	22	SLET	4.99
39	ICFAI Tech School, The ICFAI University, Dehradun, Uttarakhand	2003	Private	NAAC	No	Yes	27	JEE / SLET / Other	5.96



CSR-GHRDC Engineering Colleges Survey 2022

Sl. No.	Name of the Engineering College	Year of Establishment*	Government / Private*	Accreditation (National / International)*	On Campus Hostel Facility Available*	Ph.D. / Fellow Programme in Engineering*	% of Core Faculty with Ph.D.*	Mode of Entrance*	Tuition Fees (Tuition + Other Fees) (Rs. in Lakh)*
40	ICFAITech (Faculty of Science and Technology), Jaipur, Rajasthan	2011	Private	NA	Yes	Yes	53	NA	3.50
41	IIMT College of Engineering, Greater Noida, Uttar Pradesh	2005	Private	NBA	Yes	No	29	SLET	4.02
42	IIMT Engineering College, Meerut, Uttar Pradesh	2001	Private	NBA	Yes	No	25	JEE / Other	3.06
43	IMS Engineering College, Ghaziabad, Uttar Pradesh	2002	Private	NAAC/NBA	Yes	Yes	29	JEE	5.08
44	Institute of Aeronautical Engineering, Hyderabad, Telangana	2000	Private	NAAC	Yes	Yes	23	SLET	4.00
45	Institute of Technology, Nirma University, Ahmedabad, Gujarat	1994	Private	NAAC	Yes	Yes	54	JEE / SLET / Other	7.51
46	IPS Academy, Institute of Engineering & Science, Indore, Madhya Pradesh	1999	Private	NBA	Yes	No	23	JEE / Other	4.27
47	J N T U H University College of Engineering Hyderabad, Hyderabad, Telangana	1965	Government	NBA	Yes	Yes	100	TSEAMCET	0.87
48	Jai Narain College of Technology, Bhopal, Madhya Pradesh	2003	Private	NA	Yes	No	18	JEE / SLET	2.31
49	Jaypee Institute of Information Technology, Noida, Uttar Pradesh	2001	Private	NAAC/NBA	Yes	Yes	79	JEE / Other	10.67
50	K. Ramakrishnan College of Engineering, Trichirapalli, Tamil Nadu	2008	Private	NAAC / ISO / NBA	Yes	Yes	19	As per Tamil Nadu Anna University Norms	2.40
51	K.S.R. College of Engineering, Namakkal, Tamil Nadu	2001	Private	NAAC/NBA	Yes	Yes	35	TNEA	2.92
52	KCG College of Technology, Chennai, Tamil Nadu	1998	Private	NBA	Yes	Yes	44	JEE / AMECET	3.40
53	KKR & KSR Institute of Technology & Sciences, Guntur, Andhra Pradesh	2008	Private	NBA/NAAC	No	No	10	SLET	1.67
54	KLE Technological University's Dr. M. S. Sheshgiri College of Engineering & Technology, Belgaum, Karnataka	1979	Private	NBA	Yes	Yes	33	CET / COMEDK	6.44
55	Knowledge Institute of Technology, Salem, Tamil Nadu	2009	Private	NAAC/NBA	Yes	Yes	14	AII GQ / TNEA Single "Window Counselling"	2.20
56	Koneru Lakshmaiah Education Foundation, Guntur, Andhra Pradesh	1980	Private	NAAC	Yes	Yes	52	JEE / SLET / KLEEE	9.67
57	KPR Institute of Engineering and Technology, Coimbatore, Tamil Nadu	2009	Private	NAAC/NBA	Yes	Yes	48	Other	3.24
58	KSR Institute for Engineering and Technology, Namakkal, Tamil Nadu	2011	Private	NBA	Yes	Yes	32	NA	2.64
59	Lakshmi Narain College of Technology & Science, Bhopal, Madhya Pradesh	2006	Private	NA	Yes	No	19	NA	3.11
60	M. Kumarasamy College of Engineering, Karur, Tamil Nadu	2000	Private	NAAC/NBA	Yes	Yes	24	As per Tamil Nadu Government Norms	3.20
61	Maharishi Markandeshwar Engineering College, Mullana – Ambala, Haryana	1995	Private	NAAC	Yes	Yes	61	Other	6.00
62	Mahatma Gandhi Institute of Technology, Hyderabad, Telangana	1997	Private	NA	Yes	No	32	JEE / SLET / Other	4.95
63	Malla Reddy College of Engineering and Technology, Secunderabad, Telangana	2004	Private	NBA/NAAC	Yes	Yes	17	EAMCET	4.04



CSR-GHRDC Engineering Colleges Survey 2022

Sl. No.	Name of the Engineering College	Year of Establishment*	Government / Private*	Accreditation (National / International)*	On Campus Hostel Facility Available*	Ph.D. / Fellow Programme in Engineering*	% of Core Faculty with Ph.D.*	Mode of Entrance*	Tuition Fees (Tuition + Other Fees) (Rs. in Lakh)*
64	Malla Reddy Engineering College for Women, Secunderabad, Telangana	2008	Private	NBA / NAAC	Yes	No	16	TSEM CET	3.22
65	Manipal University, Jaipur, Rajasthan	2011	Private	NAAC / NBA	Yes	Yes	71	MET	12.46
66	Mohandas College of Engineering and Technology, Trivandrum, Kerala	2002	Private	NAAC	Yes	No	12	NA	3.16
67	Motilal Nehru National Institute of Technology Allahabad, Prayagraj, Uttar Pradesh	1961	Government	NBA	Yes	Yes	99	JEE	6.57
68	Muthayammal Engineering College, Namakkal, Tamil Nadu	2000	Private	NAAC / NBA	Yes	Yes	23	TNEA / Other	2.60
69	Narula Institute of Technology, Kolkata, West Bengal	2001	Private	NAAC / NBA	Yes	No	28	JEE / SLET / Other	4.08
70	Oriental Institute of Science and Technology, Bhopal, Madhya Pradesh	1995	Private	NBA	Yes	No	16	JEE / Other	3.66
71	PBR Visvodaya Institute of Technology & Science, Kavali, Andhra Pradesh	1998	Private	NAAC	Yes	Yes	15	EAPCET	2.00
72	Rajagiri School of Engineering & Technology (Autonomous), Kochi, Kerala	2001	Private	NAAC / NBA	Yes	Yes	26	SLET	3.40
73	Rajeev Gandhi Memorial College of Engineering and Technology, Nandyal, Andhra Pradesh	1995	Private	NBA / NAAC	Yes	Yes	34	APEAPCET	2.72
74	Rajkiya Engineering College, Kannauj, Uttar Pradesh	2015	Government	NA	Yes	Yes	22	NA	2.22
75	Rajshree Institute of Management & Technology, Bareilly, Uttar Pradesh	2009	Private	NA	Yes	No	25	SLET	3.05
76	Ravindra College of Engineering for Women, Kurnool, Andhra Pradesh	2008	Private	NBA	Yes	No	14	EAMCET	1.40
77	Reva University, Bengaluru, Karnataka	2013	Private	NA	Yes	Yes	39	KCET / REVACET / COMEDK	17.00
78	Rungta College of Engineering and Technology, Bilai, Chhattisgarh	1999	Private	NAAC / NBA	Yes	Yes	41	JEE / SLET / Other	2.87
79	Sagar Institute of Research & Technology - Excellence, Bhopal, Madhya Pradesh	2008	Private	NA	Yes	No	12	JEE / Other	2.65
80	Sagar Institute of Research & Technology, Bhopal, Madhya Pradesh	2003	Private	NBA	Yes	No	28	JEE	3.52
81	Sahrdya College of Engineering & Technology, Thrissur, Kerala	2002	Private	NAAC	Yes	Yes	23	JEE / SLET	3.60
82	Sathyabama Institute of Science and Technology, Chennai, Tamil Nadu	1988	Private	NAAC / NBA	Yes	Yes	39	Sathyabama All India Online Ent. Exam 2021	8.60
83	School of Engineering & Technology, Sushant University, Gurugram, Haryana	2012	Private	NA	Yes	Yes	62	SUEE	7.74
84	School of Engineering, Presidency University, Bengaluru, Karnataka	2015	Private	NA	No	Yes	43	JEE / SLET / Other	9.35
85	SCMS School of Engineering and Technology, Ernakulam, Kerala	2001	Private	NAAC / NBA	Yes	Yes	22	JEE / SLET	3.20
86	Sengunthar Engineering College, Tiruchengode, Namakkal, Tamil Nadu	2001	Private	NAAC	Yes	No	11	C.E.T. Examination	2.40
87	Shirpur Education Society's, R.C. Patel Institute of Technology (An Autonomous Institute), Shirpur, Maharashtra	2001	Private	NAAC	Yes	Yes	21	JEE / SLET	4.48



CSR-GHRDC Engineering Colleges Survey 2022

Sl. No.	Name of the Engineering College	Year of Establishment*	Government / Private*	Accreditation (National / International)*	On Campus Hostel Facility Available*	Ph.D. / Fellow Programme in Engineering*	% of Core Faculty with Ph.D.*	Mode of Entrance*	Tuition Fees (Tuition + Other Fees) (Rs. in Lakh)*
88	Shri Dharmasthala Manjunatheshwara College of Engineering & Technology, Dharwad, Karnataka	1979	Private	NBA	Yes	Yes	39	SLET / Comed-K / Other	3.08
89	Shri Ram Murti Smarak College of Engineering & Technology, Bareilly, Uttar Pradesh	1996	Private	NA	Yes	No	25	JEE	5.19
90	Shri Ramdeobaba College of Engineering and Management, Nagpur, Maharashtra	1984	Private	NBA/NAAC	Yes	Yes	56	JEE / SLET	6.32
91	Shri Shankaracharya Technical Campus, Bhilai, Chhattisgarh	1999	Private	NA	Yes	Yes	19	JEE / Other	2.65
92	Siddhartha Institute of Science and Technology, Puttur, Andhra Pradesh	2008	Private	NAAC/NBA	Yes	No	11	EAPCET	2.06
93	Sikkim Manipal Institute of Technology, Rangpo, Sikkim	1997	Private	NAAC	Yes	Yes	56	JEE / SLET / MET / SMITONLINE TEST	15.30
94	Sinhgad College of Engineering, Pune, Maharashtra	1996	Private	NAAC/NBA	Yes	Yes	21	JEE / SLET	5.04
95	Sir M. Visvesvaraya Institute of Technology, Bengaluru, Karnataka	1986	Private	NAAC/NBA	Yes	Yes	NA	CET / COMED-K	2.81
96	Sona College of Technology, Salem, Tamil Nadu	1997	Private	NBA/NAAC	Yes	Yes	50	NA	2.20
97	SRM University, Sonapat, Haryana	2013	Private	NA	Yes	Yes	35	JEE / SRMJEEE / SRMHCAT	7.89
98	SVKM's NMIMS Mukesh Patel School of Technology Management & Engineering, Mumbai, Maharashtra	2006	Private	ABET / NAAC/NBA	Yes	Yes	40	NPAT	12.06
99	Swami Keshvanand Institute of Technology, Management & Gramothan, Jaipur, Rajasthan	2000	Private	NBA	Yes	No	33	JEE / Other	3.62
100	Thapar Institute of Engineering & Technology, Patiala, Punjab	1956	Private	NBA/NAAC/ISO / ABET	Yes	Yes	97	JEE / PCM	18.37
101	The ICFAI University, Kamalghat (W), Tripura	2004	Private	NAAC	Yes	Yes	75	TBJEE / IUTAT	4.20
102	The NorthCap University, Gurugram, Haryana	1996	Private	NAAC / ASIC / AIU	No	Yes	69	JEE / Other	10.40
103	University Institute of Science and Technology (Rabindranath Tagore University), Raisen, Madhya Pradesh	2009	Private	NAAC	Yes	Yes	36	AJEE	2.49
104	University of Engineering and Management, Kolkata, West Bengal	2014	Private	NA	No	Yes	20	IEMJEE	5.89
105	Vedavyasa Institute of Technology, Malappuram, Kerala	2004	Private	NA	Yes	No	12	JEE / SLET	1.78
106	Vel Tech Multi Tech Dr. Rangarajan Dr. Sakunthala Engineering College, Chennai, Tamil Nadu	1999	Private	NAAC/NBA / FIST / SIRO / CSI	Yes	No	13	Tamil Nadu Professional Service Examination	3.00
107	Velagapudi Ramakrishna Siddhartha Engineering College, Vijayawada, Andhra Pradesh	1977	Private	NBA/NABL	Yes	Yes	39	CAT / APEAPCET	2.65
108	Vidyavardhaka College of Engineering, Mysuru, Karnataka	1997	Private	NBA/NAAC	Yes	Yes	28	KCET	7.92
109	Vishwakarma Institute of Technology, Pune, Maharashtra	1983	Private	NAAC/NBA	No	Yes	18	JEE / SLET / Other	7.38
110	Visvodaya Engineering College, Kavali, Andhra Pradesh	2008	Private	NA	Yes	No	13	EAMCET	1.77

* Data as provided by the Participating Institutes

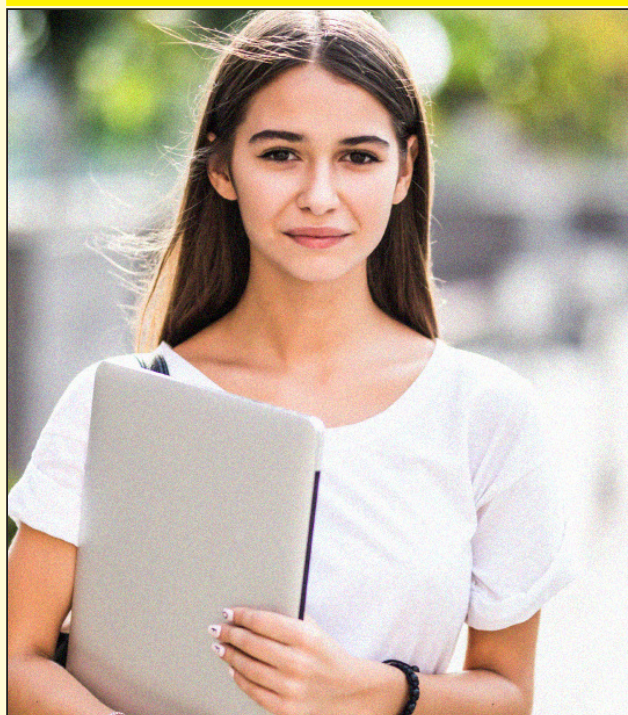


Top Prominent And Well-Known Engineering College Of India

Name of the Engineering Institute

- ★ School of Engineering & Technology (ITM University Gwalior), Madhya Pradesh
- ★ D Y Patil International University, Akurdi, Pune, Maharashtra
- ★ Gyan Ganga Institute of Technology & Sciences, Jabalpur, Madhya Pradesh
- ★ KIET Group of Institutions, Delhi-NCR, Ghaziabad, Uttar Pradesh
- ★ IES Institute of Technology & Management, IES Group of Institutions, Bhopal, Madhya Pradesh
- ★ School of Engineering & Technology, GIET University, Gunupur, Dist. - Rayagada, Odisha
- ★ Vellore Institute of Technology, VIT-Chennai, Vellore, Tamil Nadu
- ★ Francis Xavier Engineering College, Tirunelveli, Tamil Nadu
- ★ School of Engineering, Tezpur University, Tezpur, Assam
- ★ School of Engineering & Technology, The Assam Kaziranga University, Jorhat, Assam
- ★ Girijananda Chowdhury Institute of Management and Technology (GIMT), Guwahati

New Engineering College, VIPS-TC, Pitampura, Delhi, offering B-Tech courses in emerging areas, approved by AICTE (AI, DS, ML, IIOT)



Engineering education has come of age in India, with a host of institutes leading the way. However, amid a plethora of Engineering institutions spread across India, choosing the right and best-suited one to pursue a career in Engineering is of utmost importance. As this choice can make or break the aspirants' dream of a great career, they need to arrive at a well-informed and well thought-out decision in this regard, sooner than later.